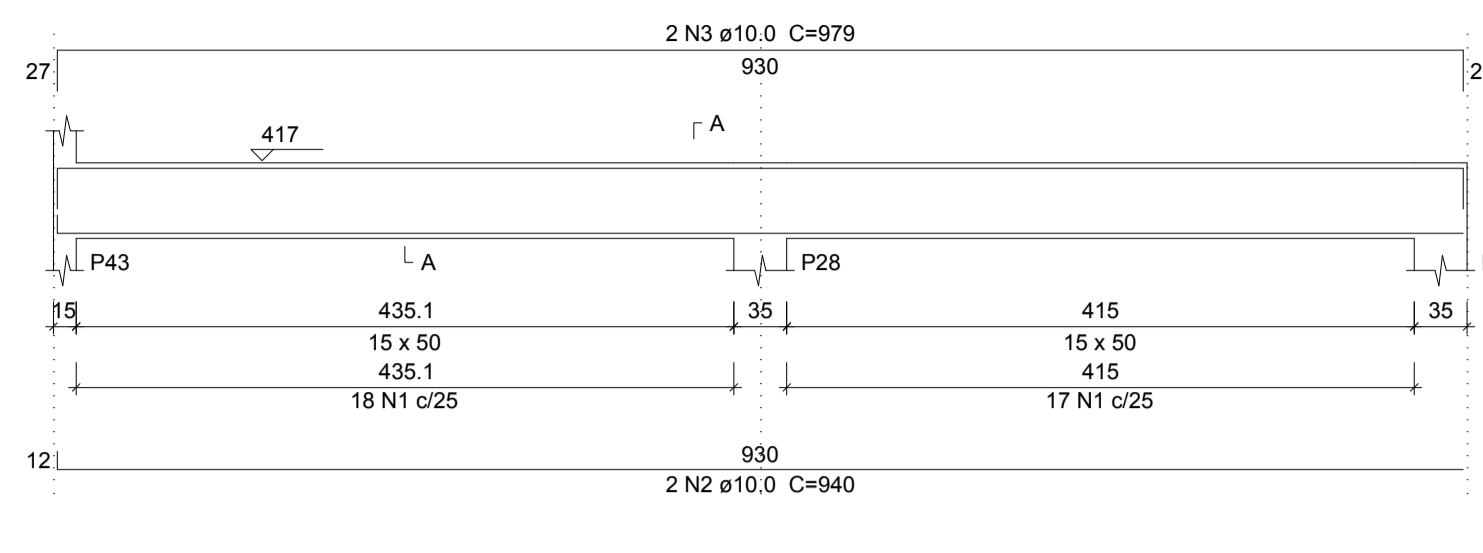
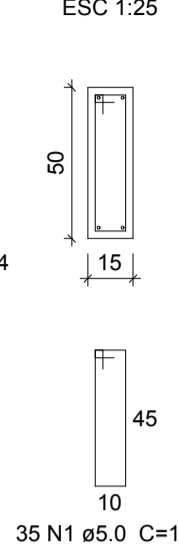


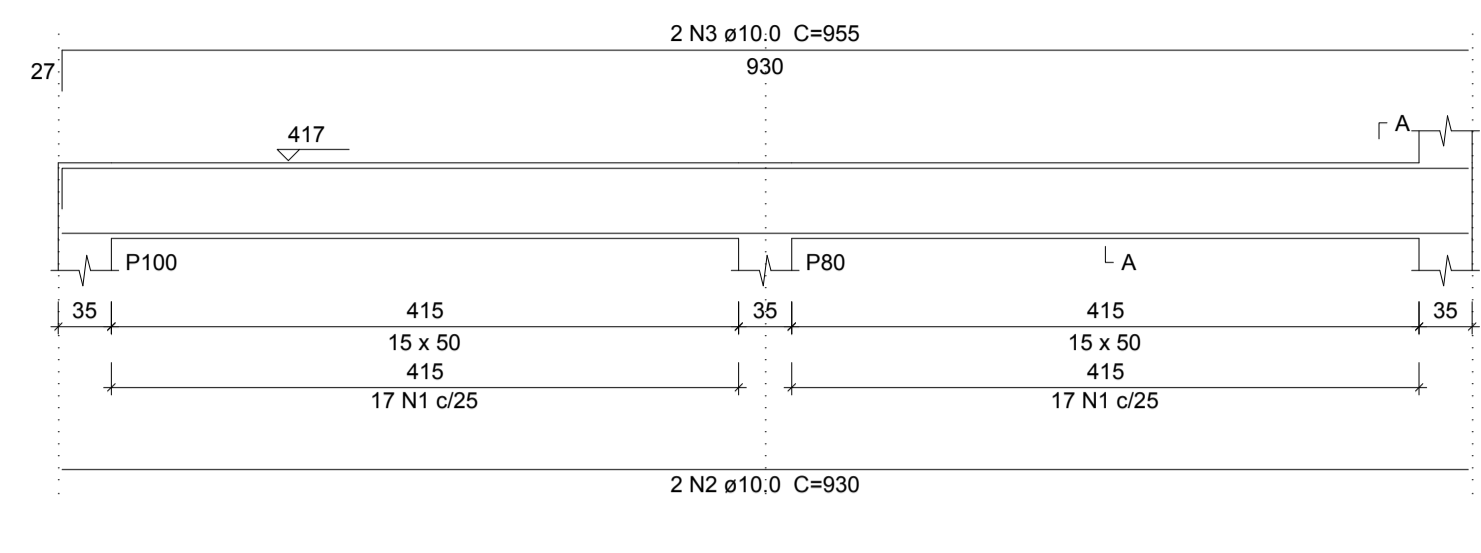
**VR51**  
ESC 1:50



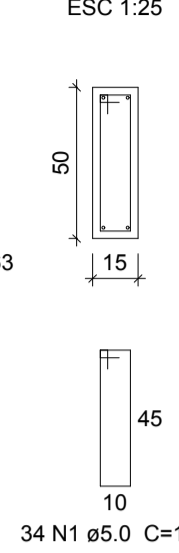
SEÇÃO A-A  
ESC 1:25



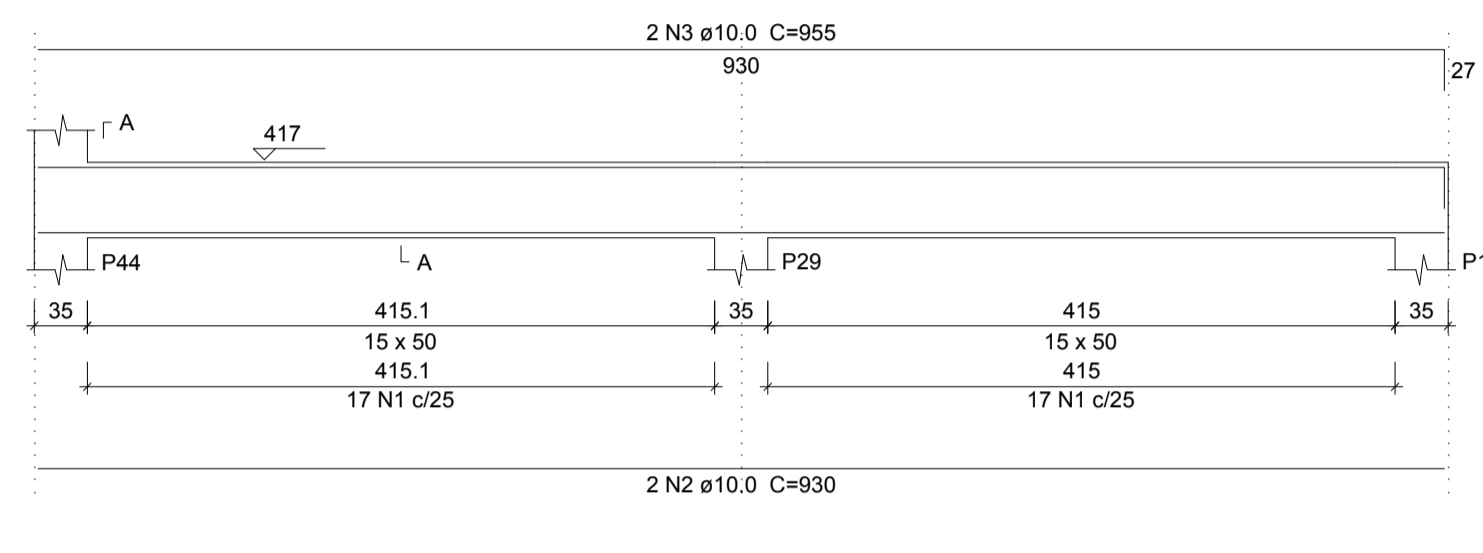
**VR52**  
ESC 1:50



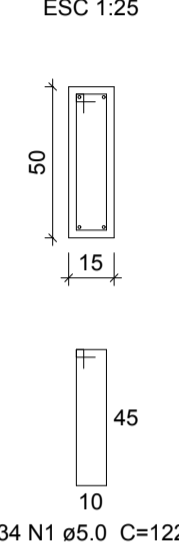
SEÇÃO A-A  
ESC 1:25



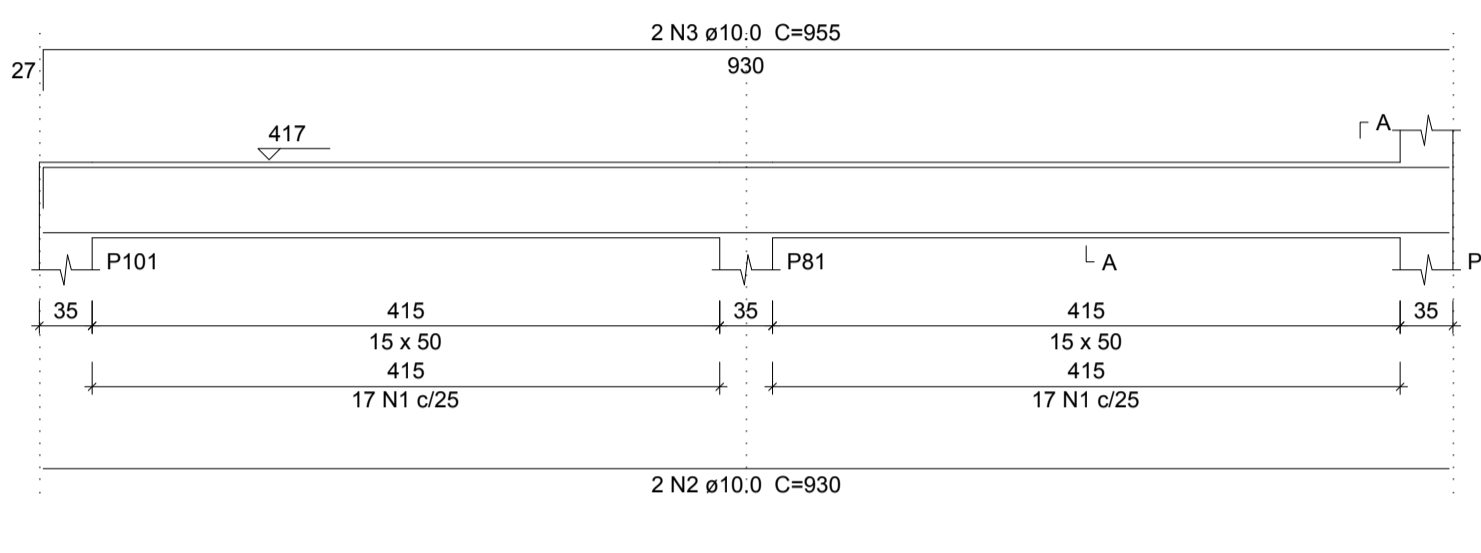
**VR53**  
ESC 1:50



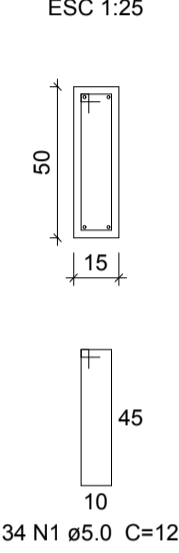
SEÇÃO A-A  
ESC 1:25



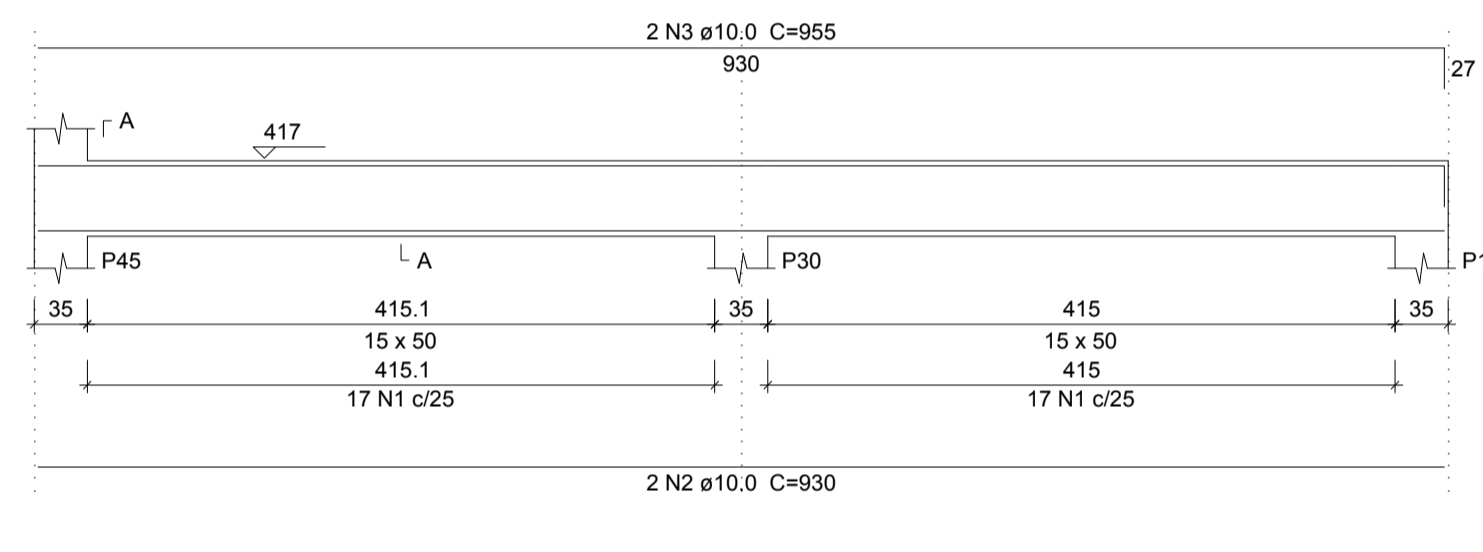
**VR54**  
ESC 1:50



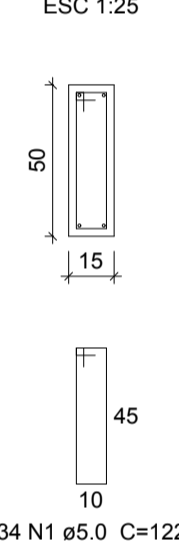
SEÇÃO A-A  
ESC 1:25



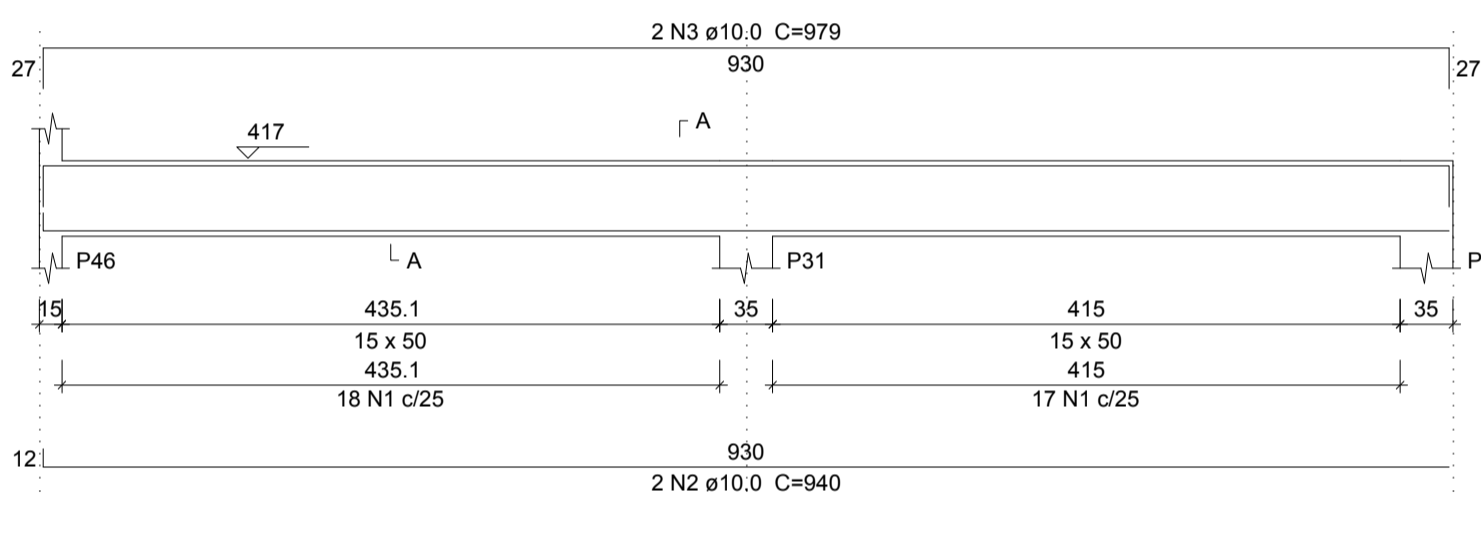
**VR55**  
ESC 1:50



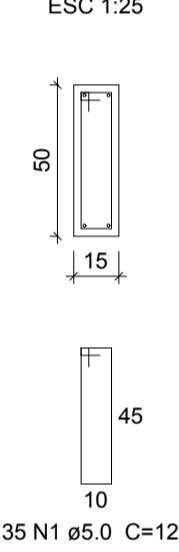
SEÇÃO A-A  
ESC 1:25



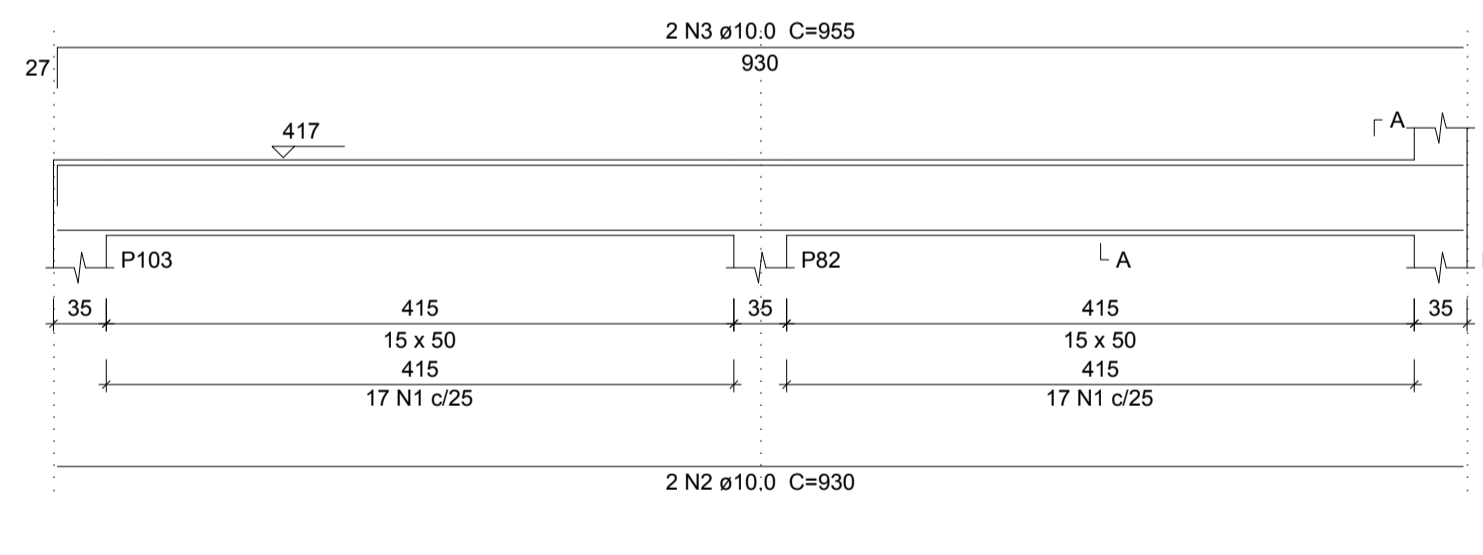
**VR56**  
ESC 1:50



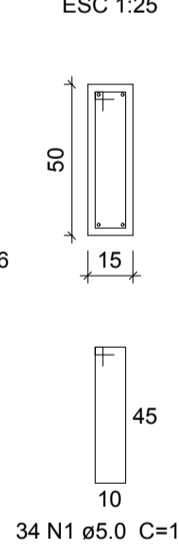
SEÇÃO A-A  
ESC 1:25



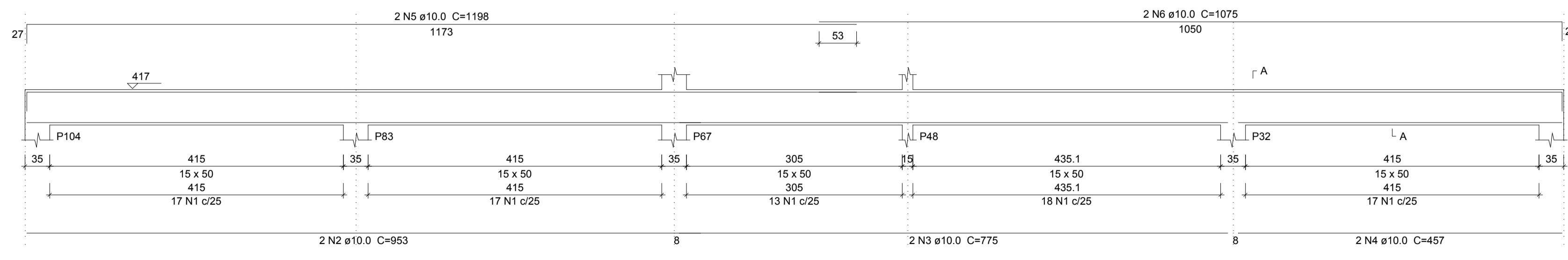
**VR57**  
ESC 1:50



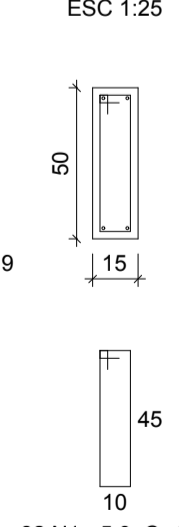
SEÇÃO A-A  
ESC 1:25



**VR58**  
ESC 1:50



SEÇÃO A-A  
ESC 1:25



Relação do aço

ELEMENTO	AÇO	N	DIAM	Q	UNIT (cm)	C.TOTAL (cm)
VR51	CA60	1	5.0	35	122	4270
	CA50	2	10.0	2	940	1880
	CA50	3	10.0	2	979	1958
VR52	CA60	1	5.0	34	122	4148
	CA50	2	10.0	2	930	1860
	CA50	3	10.0	2	955	1910
VR53	CA60	1	5.0	34	122	4148
	CA50	2	10.0	2	930	1860
	CA50	3	10.0	2	955	1910
VR54	CA60	1	5.0	34	122	4148
	CA50	2	10.0	2	930	1860
	CA50	3	10.0	2	955	1910
VR55	CA60	1	5.0	34	122	4148
	CA50	2	10.0	2	930	1860
	CA50	3	10.0	2	955	1910
VR56	CA60	1	5.0	35	122	4270
	CA50	2	10.0	2	940	1880
	CA50	3	10.0	2	979	1958
VR57	CA60	1	5.0	34	122	4148
	CA50	2	10.0	2	930	1860
	CA50	3	10.0	2	955	1910
VR58	CA60	1	5.0	82	122	10004
	CA50	2	10.0	2	953	1906
	CA50	3	10.0	2	775	1550
	CA50	4	10.0	2	457	914
	CA50	5	10.0	2	1198	2396
	CA50	6	10.0	2	1075	2150

Resumo do aço

AÇO	DIAM	C. TOTAL (m)	PESO (kg)
CA50	10.0	354.5	218.5
CA60	5.0	392.9	60.6
PESO TOTAL			
CA50		218.5	
CA60		60.6	

Vol. de concreto total (C-25) = 6.54 m³  
Área de forma total = 100.20 m²



DETALHE ESTRIBO LIGAÇÃO VIGA E PILAR S/ESCALA

TIPO DA OBRA:	REESTRUTURAÇÃO DA ESCOLA ESTADUAL JOSÉ ALVES BEZERRA
PROPRIETÁRIO CPF OU CGC:	PREFEITURA MUNICIPAL DE PORTO DOS GAÚCHOS
LOCAL E INSCRIÇÃO CADASTRAL:	Endereço: Av. Guilherme Meyer Município de Porto dos Gaúchos - MATO GROSSO
AUTOR DO PROJETO: CREA:	Evelin Luani Montagna MT 039125
RESPONSÁVEL TÉCNICO: CREA:	Evelin Luani Montagna MT 039125
ESCALA: INDICADA   DATA: OUT/2019	ASSUNTO: PROJETO ESTRUTURAL: PLANTA DE ARMAÇÃO DAS VIGAS VR51, VR52, VR53, VR54, VR55, VR56, VR57, VR58
DESENHO:	FOLHA Nº 41/45
E S T A T I S T I C A	
ÁREAS:	% DE OCUPAÇÃO
VER PROJETO ARQUITETÔNICO	TÉRREO   DEMAIS PAV.
	COEF. APROVEIT.   Nº DE PISOS
	<b>01</b>